

INCENTIVES ARE GOOD FOR NEBRASKA

A positive economic climate paves the way for new property tax revenue, new jobs and new growth.

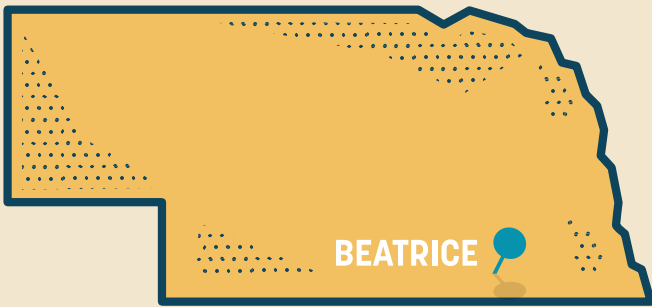
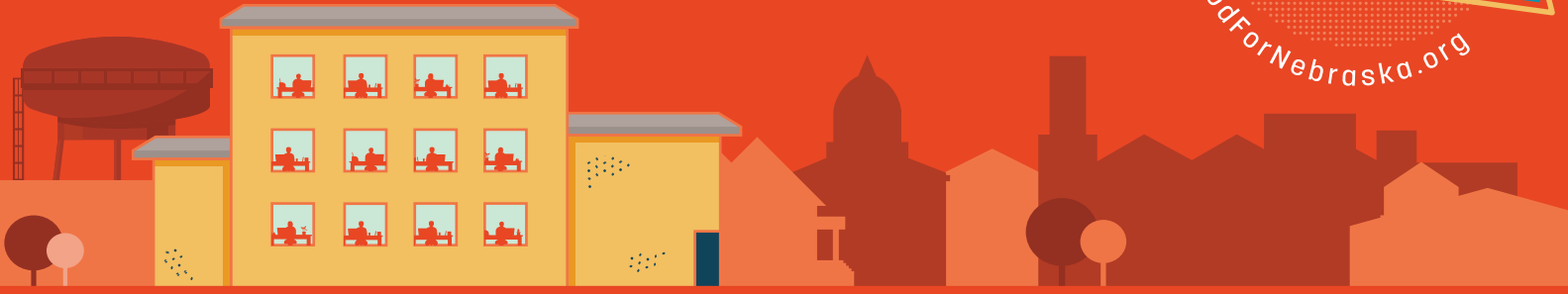
CASE STUDY #3

HQ/BACK OFFICE - EXISTING EXPANSION

SUPPORT



GodForNebraska.org



BEATRICE

An established company, headquartered in Nebraska, expands their organization with a new office expansion to support their regional sales team.

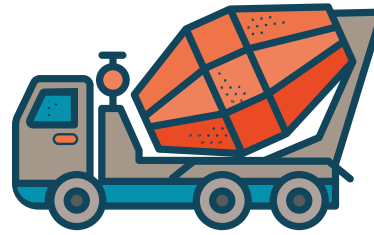


ANNUAL BOOST TO STATE ECONOMY

\$22.5 MILLION*

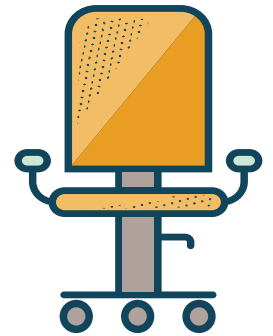
10-YEAR INCENTIVE R.O.I.† **2.29:1**

DOLLARS INVESTED



\$7 MIL.

for construction activity

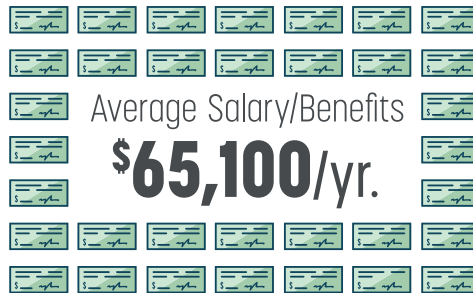


\$1 MIL.

in furniture, fixtures and equipment

TOTAL CAPITAL INVESTMENT: **\$8 MILLION**

JOBS CREATED & SUPPORTED



ANNUAL BOOST TO NEBRASKA PERSONAL INCOME: **\$9.2 MILLION****

GOOD FOR NEBRASKA

* When fully operational. Includes activity directly related to company's operations and associated spillover activity.

** Wages and benefits for jobs directly related to projects, additional B2B spending and additional household spending.

† Return on investment to state and local tax returns compared to incentives provided.